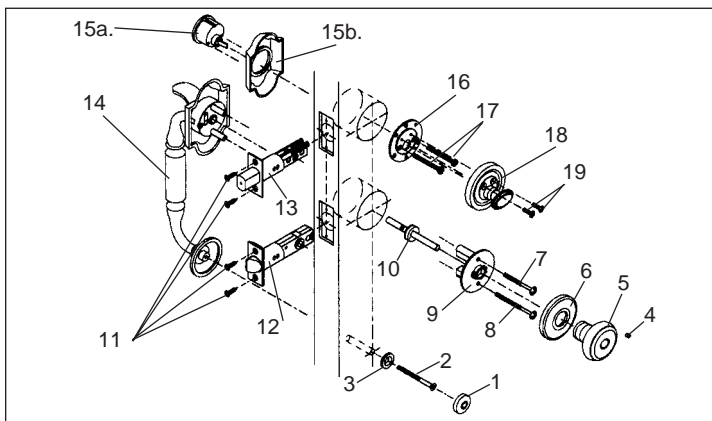


Handleset Trim Installation: Single Cylinder & Double Cylinder

Exploded View Single Cylinder Handleset

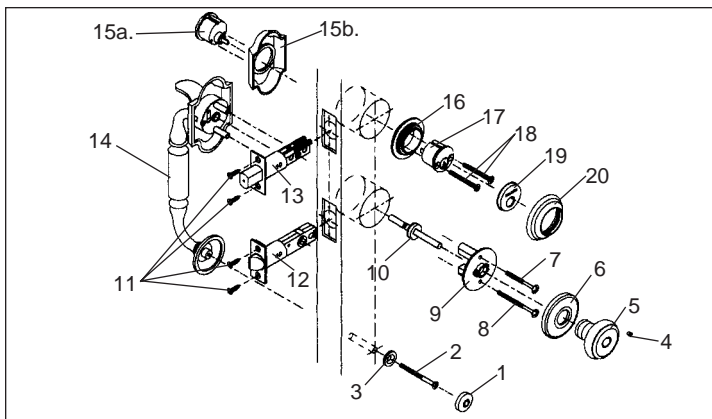


Parts Enclosed:

- | | |
|---|--|
| 1. 1 Screw Cover | 12. 1 Adjustable Backset Latch |
| 2. 1 #10-32 x 2-1/2" Flat Head Machine Screw | 13. 1 Adjustable Backset Deadbolt |
| 3. 1 Screw Cover Backplate | 14. 1 Outside Handle |
| 4. 1 Set Screw | 15a. 1 Outside Cylinder |
| 5. 1 Knob | 15b. 1 Outside Cylinder Collar |
| 6. 1 Rosette | 16. 1 Turnpiece Mounting Plate |
| 7. 1 #10-32 x 2-1/8" Truss Head Screw | 17. 2 each #10-32 x 1-7/8" Pan Head Machine Screws |
| 8. 1 #10-32 x 2-5/8" Truss Head Screw | 18. 1 Turnpiece Trim |
| 9. 1 Adaptor | 19. 2 each #8-32 x 5/8" Oval Head Machine Screws |
| 10. 1 Spindle Assembly | 20. 1 Allen Wrench (not shown) |
| 11. 4 each #8 x 3/4" Flat Head Combination Screws | |

Note: See Strike Installation section for strike parts listing.

Exploded View Double Cylinder Handleset



Parts Enclosed:

- | | |
|---|---|
| 1. 1 Screw Cover | 12. 1 Adjustable Backset Latch |
| 2. 1 #10-32 x 2-1/2" Flat Head Machine Screw | 13. 1 Adjustable Backset Deadbolt |
| 3. 1 Screw Cover Backplate | 14. 1 Outside Handle |
| 4. 1 Set Screw | 15a. 1 Outside Cylinder |
| 5. 1 Knob | 15b. 1 Outside Cylinder Collar |
| 6. 1 Rosette | 16. 1 Threaded Collar |
| 7. 1 #10-32 x 2-1/8" Truss Head Screw | 17. 1 Inside Cylinder |
| 8. 1 #10-32 x 2-5/8" Truss Head Screw | 18. 2 each #10-32 x 2-1/4" Flat Head Machine Screws |
| 9. 1 Adaptor | 19. 1 Cylinder Cover |
| 10. 1 Spindle Assembly | 20. 1 Inside Cylinder Collar |
| 11. 4 each #8 x 3/4" Flat Head Combination Screws | 21. 1 Allen Wrench (not shown) |

Note: See Strike Installation section for strike parts listing.

Tools Needed: Only Required for Doors Without Cutout

1. Pencil
2. Measuring Device
3. Hole Saw, 2-1/8" diameter (required when door is not prepared)
4. 1/2" and 3/4" Wood Chisel
5. Drill and Assorted Bits: 1/8", 5/32", 5/16", 1/2" (required for FD trim only) and 1".

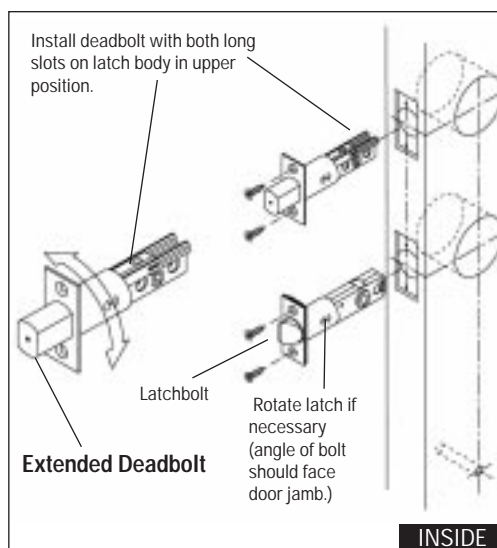
Tools Needed: Trim Installation for Doors with 2-1/8" Cutouts

1. Measuring Device
2. Two Pairs of Pliers
3. No. 2 and No. 3 Phillips Screwdrivers
4. Allen Wrenches (supplied)
5. Flat Head Screwdriver

Installing Deadbolt and Latch

- a.** The latch and deadbolt supplied with this unit has an adjustable backset feature. It will be set at 2-3/8" backset. To adjust to 2-3/4" backset, grasp body and twist faceplate/bolthead assembly 180° until it stops. Latch or deadbolt is now ready for installation in 2-3/4" backset configuration.

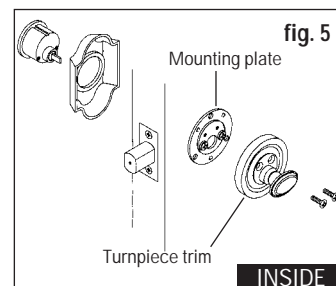
b. Insert deadbolt and latch. Install with four #8 x 3/4" flat head combination screws provided (see diagram for proper positioning). **Insure deadbolthead is extended throughout installation procedure.**



Installing Turnpiece Trim

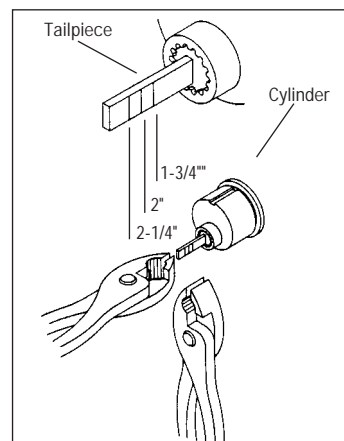
- For Single Cylinder Only**

Place turnpiece trim over mounting plate. Insert cylinder tailpiece into turn piece trim. Attach trim to mounting plate with two #8-32 x 5/8" oval head machine screws. (fig. 5)

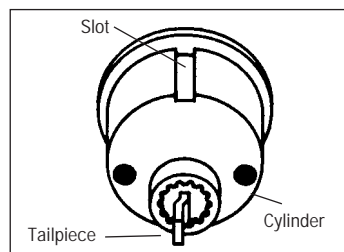


Double Cylinder Assembly

- Carefully break off cylinder tail-piece at required mark for your door thickness.

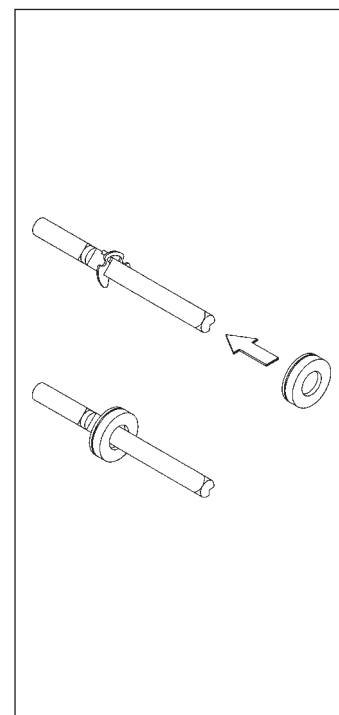


Align tailpiece with slot. Keep tail-piece vertical and curved towards the right side of the hole as illustrated.



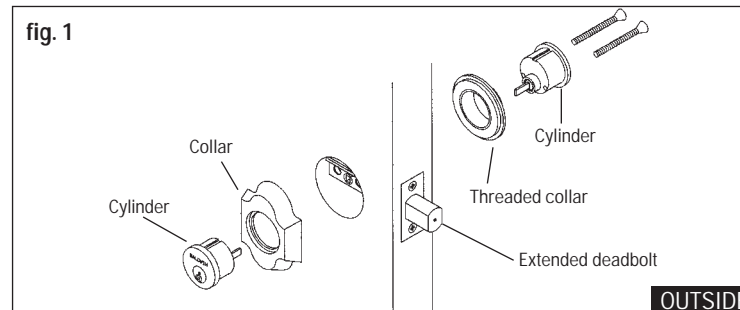
Installing Trim

- Slip spindle collar onto spindle with groove in collar toward the short end of the spindle.
- From inside of door insert short end of spindle through the latch with the "V groove" angled down and toward the hinges. Align outside handle on the door and install so, the spindle slides into the thumbpiece cartridge.



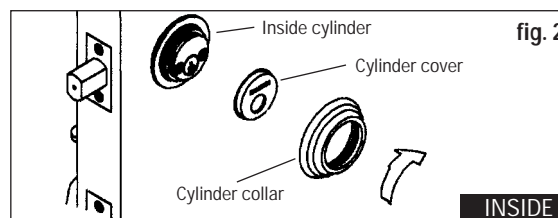
- Double Cylinder Assembly Outside** (fig. 1)

Extend deadbolt using flat head screwdriver. Keeping tailpiece vertical and toward the right side of the hole, insert outside cylinder through collar and into the deadbolt. Align slot of inside cylinder with notch in threaded collar. Keeping tailpiece vertical and curved toward the right, insert cylinder with threaded collar into the deadbolt. Attach cylinders using two #10-32 x 2-1/4" flat head machine screws. Tighten screws. Do not insert key during this procedure.



- Double Cylinder Assembly Inside**

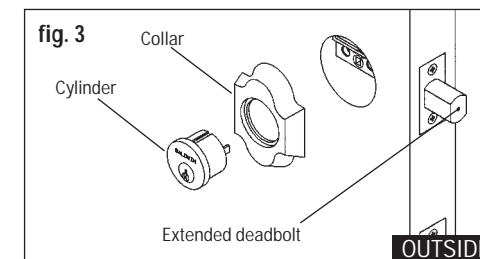
Align cylinder cover over inside cylinder. Screw on decorative cylinder collar. (fig. 2) Proceed to Step 6.



Single Cylinder Assembly

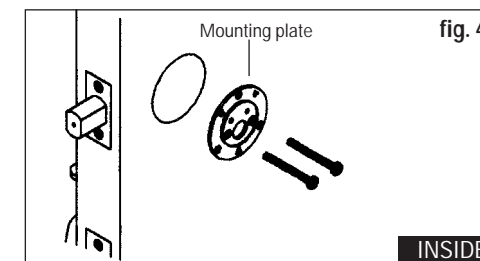
- Single Cylinder Assembly Outside** (fig. 3)

Extend deadbolt using flat head screwdriver. Keeping tailpiece vertical, insert cylinder through collar and into deadbolt. Hold in place. Do not insert key during this procedure.



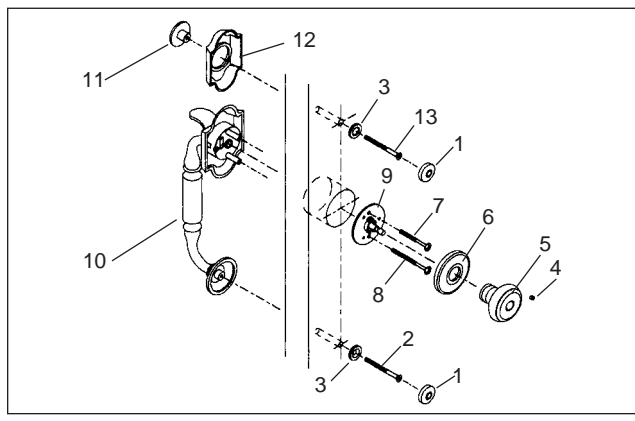
- Single Cylinder Assembly Inside**

Place turnpiece mounting plate on inside of door as shown. Attach cylinder using two #10-32 x 1-7/8" pan head machine screws. Tighten all screws. (fig. 4) Proceed to Step 5.



Handleset Trim Installation: Dummy

Exploded View Dummy Handleset

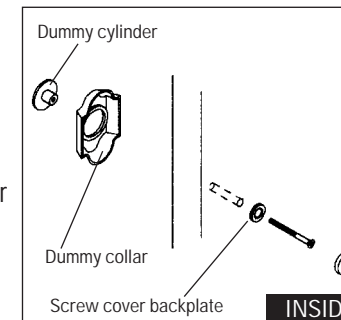


Parts Enclosed:

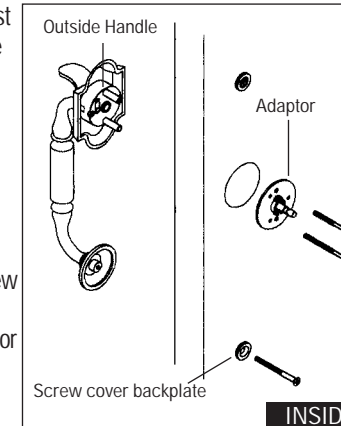
- | | |
|--|---------------------------------------|
| 1. 2 each Screw Covers | 8. 1 #10-32 x 2-5/8" Truss Head Screw |
| 2. 1 #10-32 x 2-1/2" Flat Head Machine Screw | 9. 1 Adaptor |
| 3. 2 each Screw Cover Backplates | 10. 1 Outside Handle |
| 4. 1 Set Screw | 11. 1 Dummy Cylinder |
| 5. 1 Knob | 12. 1 Dummy Cylinder Collar |
| 6. 1 Rosette | 13. 1 #8-32 x 2-1/4 Machine Screw |
| 7. 1 #10-32 x 2-1/8" Truss Head Screw | 14. Allen Wrench (not shown) |

Installation

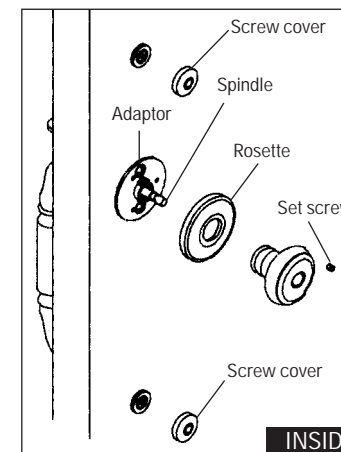
- Insert dummy cylinder through dummy cylinder collar and into door. From inside of door, insert #8-32 x 2-1/4" machine screw through screw cover backplate and screw into dummy cylinder.



- Place outside handle against door. Attach outside handle to inside adaptor with the short #10-32 x 2-1/8" truss head screw in the top hole and #10-32 x 2-5/8" truss head screw in the bottom hole. To secure bottom of pull, insert the #10-32 x 2-1/2" flat head machine screw through screw cover backplate and screw through door and into bottom of outside handle. Tighten all screws.



- Snap rosette onto adaptor. Slide knob onto spindle and tighten set screw. Attach screw covers. Congratulations! Your installation is now complete.



Congratulations!

With your purchase of The Images Collection solid brass entrance lockset, you're among a group of discerning individuals who know the intrinsic value of selecting the finest – Baldwin.

Images entrance locksets and interior latchsets coordinate beautifully, enabling you to carry a specific design theme throughout your home.

Our step-by-step installation instructions will help guide you through your project quickly and easily.

Before you begin your installation, read and understand the installation instructions and marking templates. If you have any questions, please do not hesitate to contact our Baldwin Technical Services Department, 1-800-566-1986. We're here to help!

We thank you for your Baldwin purchase and wish you the fullest enjoyment of your Baldwin Lockset.

Technical Services Support

1-800-566-1986

Hours: 6 am to Midnight C.S.T.-7days a week.

Remember Baldwin



With the completion of your project, remember that Baldwin quality hardware and giftware products are available for all your decorating and remodeling needs. Matching knob and leversets for interior doors, beautiful bath accessories, and a complete selection of cabinet and door enhancing hardware are all available from your Baldwin retailer.

© Baldwin Hardware Corporation
P.O. Box 15048 Reading, PA 19612

PK1083(8/98)

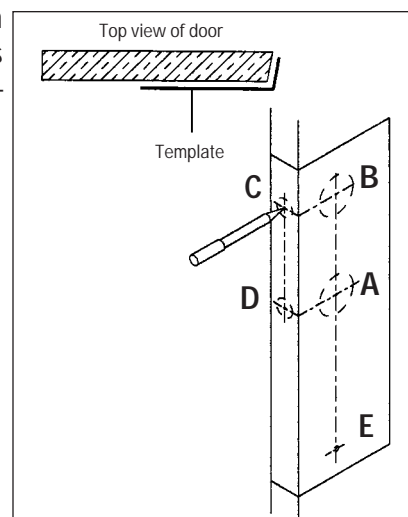
Door Preparation

Door Preparation Single Cylinder and Double Cylinder

- To position template, fold enclosed template on line and locate on door at specified height. If door is beveled, place folded edge on low side of bevel as shown in illustration. If you have a new door that is not already cut-out, please follow instructions for non-bored doors. If your door is pre-bored, please follow instructions for bored doors below.

Non-bored doors – Determine door thickness and type of handleset to be installed. Locate and mark required holes (A, B, C, D, E) for drilling, as per enclosed marking template. Proceed to Step 2.

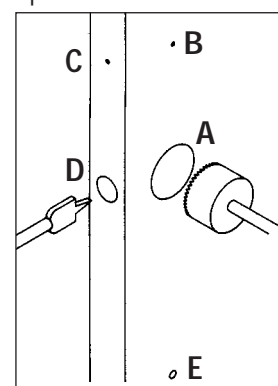
Bored doors – Mark and drill hole E (5/16") for appropriate handleset design. Now proceed to handleset installation instructions on reverse side Step 1.



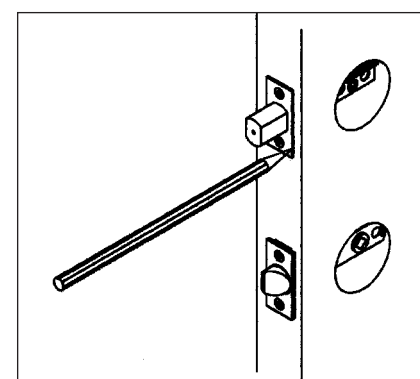
- Drill the 2-1/8" diameter face bores (A and B) through the door and 1" diameter edge bores (C and D) 3-1/2" deep for 2-3/8" backset or 3-7/8" deep for 2-3/4" backset. The latch and deadbolt accommodates both size backsets. Drill the 5/16" lower pull assembly hole (E) for the appropriate handleset shown on template.

Caution: Re-check hole locations before drilling.

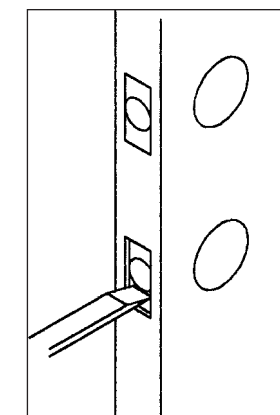
A - 2-1/8"
B - 2-1/8"
C - 1"
D - 1"
E - 5/16" Drill for proper handleset.



- Insert deadbolt into edge of door. While holding faceplate parallel to edge of door, trace an outline of the faceplate onto the door edge. Mark screw hole centers and drill. Remove deadbolt and repeat process for latch.



- Chisel out area marked in step 3 to a depth of 5/32" or until faceplate is flush with door edge.

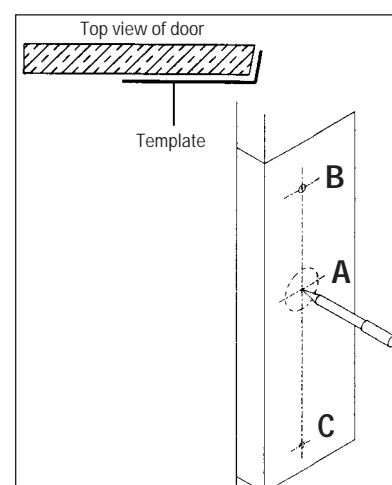


Door Preparation/Dummy Handleset

- To position template, fold enclosed template on line and locate on door at specified height. If door is beveled, place folded edge on low side of bevel as shown in illustration. If you have a new door that is not already cut-out, please follow instructions for non-bored doors. If your door is pre-bored, please follow instructions for bored doors below.

Non-bored doors – Determine door thickness and type of handleset to be installed. Measure height and backset of active trim, using enclosed marking template to locate and mark required holes (A,B,C) for drilling. Insure that backset and height match active trim. Proceed to Step 2

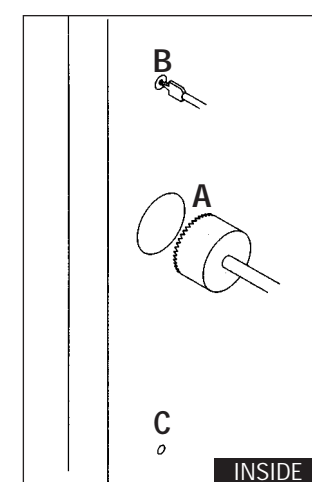
Bored doors – Mark and drill hole C (5/16") for appropriate handleset design. Now proceed to handleset installation instructions Step 1 on reverse side.



- Drill a 2-1/8" diameter face bore (A). Drill the 1/2" dummy cylinder hole (B) through the door. Drill the 5/16" lower pull assembly hole (C) for the appropriate handleset shown on template.

Caution: Re-check hole locations before drilling.

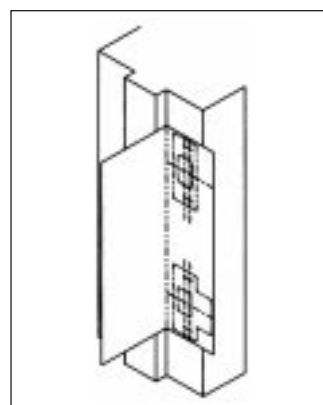
A - 2-1/8"
B - 1/2"
C - 5/16" Drill for proper handleset



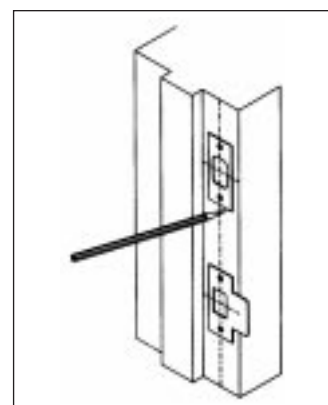
Strike Installation

Strike Installation

- Mark door frame using strike marking template, locate and mark strike mounting screws and centering points for both strikes at required door thickness.



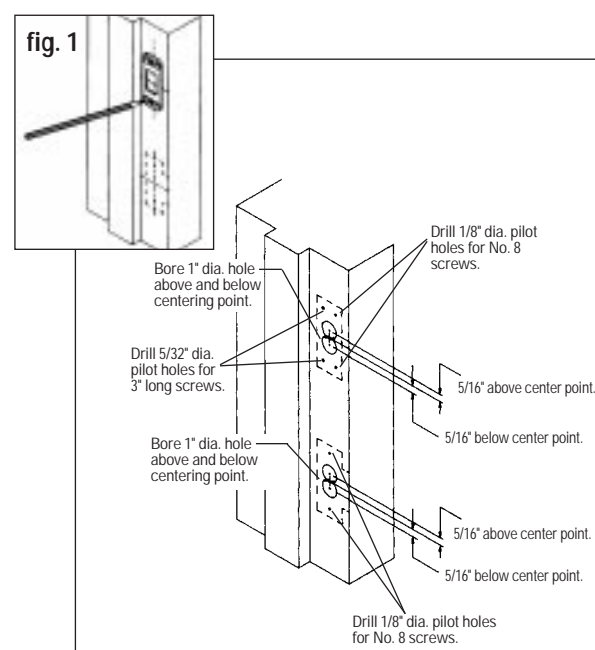
- Align and trace the outline of strikes onto the door frame using mounting screw marks for location.



TEAR HERE FOR ENGLISH.

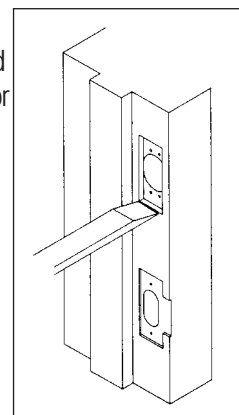
- For Deadbolt Strike:** Using reinforcing strike as a template, mark locations for reinforcing screws (fig. 1). Drill two 5/32" dia. pilot holes for the 3" long screws and two 1/8" dia. pilot holes for the #8 x 3/4" screws. Mark drill points 5/16" above and below centering point. Bore two 1" dia. holes 1-1/4" deep at these points. Chisel out holes for dust box.

For Latch Strike: At previously marked locations, drill two 1/8" dia. pilot holes for the #8 x 3/4" screws. Mark drill points 5/16" above and below centering point. Bore two 1" dia. holes x 1" deep at these points. Chisel out holes for dust box.



- For Deadbolt Strike,** mortise 7/32" deep or until the strike box, reinforcing strike and strike plate fits inside mortise and flush with the door frame.

For Latch Strike, mortise 3/32" deep or until strike box and strike fit inside mortise and flush with the door frame.

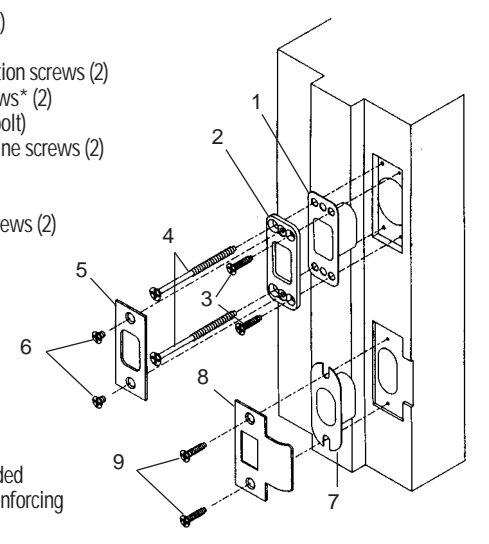


TEAR HERE FOR ENGLISH.

- Install strike as illustrated.

- Dust box (deadbolt)
- Reinforcing strike
- #8 x 3/4" combination screws (2)
- 3" reinforcing screws* (2)
- Strike plate (deadbolt)
- #8-32 x 1/4" machine screws (2)
- Dust box (latch)
- Strike (latch)
- #8 x 3/4" wood screws (2)

*Note:
Lubricant recommended when installing 3" reinforcing screws.



IMAGES®

Sectional Handleset Lock Trim

Installation Instructions



BALDWIN®

TEAR HERE FOR ENGLISH.

PK-1083 (8/98)